

STONE



Park House Drive RH2

£600,000

“At Stone, we’re passionate about the unique and awe-inspiring architectural elements that transform houses into dream homes.”

————— *The Stone Family*



Guide Priced at £600,000 - £650,000

There's something reassuring about a mid-century style home done well — the proportions, the light, the sense of space. On Park House Drive, this unique home delivers exactly that. From the outside, the familiar lines and generous picture windows hint at what's inside: A home that has been thoughtfully extended and carefully modernised for the way we live now.

Inside, the front reception room offers a different pace. It's generous yet cosy, centred around the mantel with bespoke cabinetry framing either side — a space equally suited to quiet evenings or gathering friends. Shutters soften the light, adding privacy without closing the room in.

At its heart, the kitchen and dining space is where everything naturally gathers; Clean-lined, handleless cabinetry in crisp white, grounded by a grey worktop and metro tiling that add contrast. The central island becomes a place for morning coffee, homework after school, and weekend visitors. Even the practicalities are handled with care — pocket doors slide back to reveal a neatly concealed utility, keeping the everyday quietly out of sight. Skylights draw daylight deep into the room, while bi-folding doors dissolve the boundary between inside and out.



The garden feels like an extension of the living space. A shaded patio sets the scene for long lunches and unhurried barbecues, before steps rise to a wide lawn — the kind of space that invites both play and stillness. At the far end, the garden stretches on, becoming something looser and more informal, with room for vegetable patches, muddy boots, and slower afternoons. The studio outbuilding adds another layer — workspace, retreat, or somewhere to create — while the view back towards the house reveals the scale of the extension and how seamlessly it has been integrated.

Upstairs, the layout is both practical and considered. Two double bedrooms sit alongside a third, currently used as a study, offering flexibility for growing families or home working. The family bathroom is sleek and modern. But above, the principal suite feels like a retreat in its own right.

Elevated to capture far-reaching views across fields and trees, the bedroom's sliding doors open as a Juliet balcony — glass-fronted to frame the landscape rather than interrupt it. The ensuite leans into a more indulgent mood: stone tiling, oak cabinetry, and contemporary fittings paired with colour-drenched walls to create something that feels quietly hotel-like without losing warmth. Bespoke wardrobes and clever eaves storage ensure everything has its place.

This is a house that understands balance — between character and modernity, openness and comfort, design and practicality. A home that works just as well on a busy weekday morning as it does on a slow Sunday afternoon.







Beyond the garden, the setting shifts gently into open countryside, with uninterrupted views across verdant fields forming a natural backdrop to daily life. It's a rare sense of space so close to town, where morning walks can begin from your front door and the seasons feel part of the rhythm of the home.

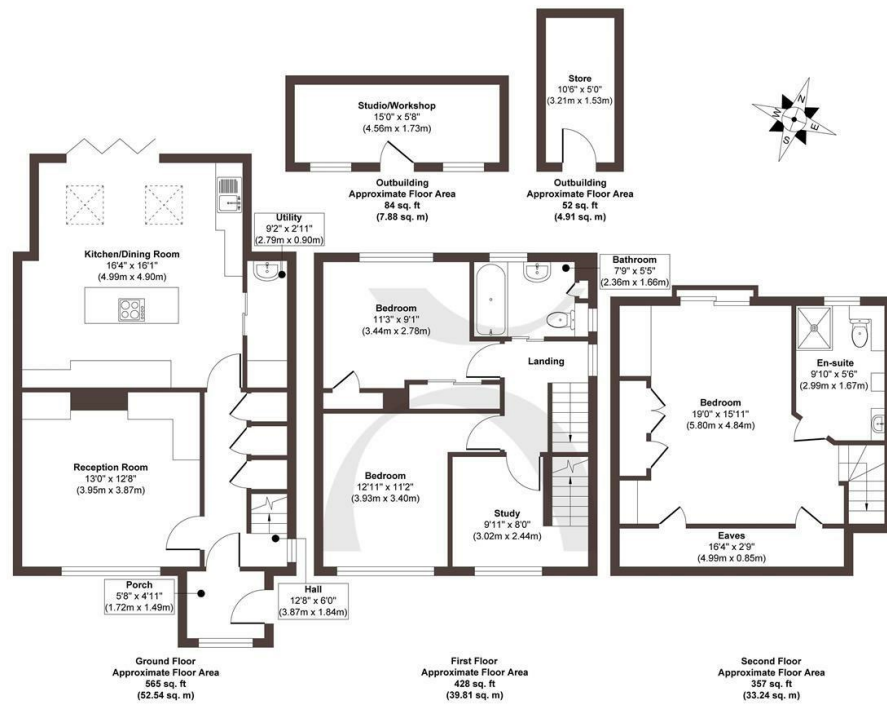
Reigate itself is within easy reach, with its historic high street offering a well-edited mix of independent shops, cafés and restaurants. Priory Park, with its much-loved viewpoint, is just a short walk away — a place for picnics, tennis, or simply taking in the view across the town.

For families, the area is well served by a selection of highly regarded schools, while transport links are straightforward, with Reigate station providing access into London and beyond. It's a location that manages to feel both connected and quietly removed — a combination that's increasingly hard to find.









Approx. Gross Internal Floor Area 1486 sq. ft / 138.38 sq. m (Including Outbuilding)

Illustration for identification purposes only, measurements are approximate, not to scale.

Produced by Elements Property

STONE

The Details

- A considered modern family home on a quiet cul-de-sac
- Thoughtfully renovated and extended by the current owners
- Three to four flexible bedrooms, with an impressive principal suite
- Modern open plan kitchen and dining room with bifold doors
- Generous tiered garden, with outbuildings backing onto fields
- Easy access to countryside walks from Park House Drive
- 5 minute walk into Priory Park and the famous view point
- 10 minute walk into Reigate's historic high street
- 20 minute walk to Reigate train station
- Guide Priced at £600,000 – £650,000

Size
Approx 1486.00 sqft

Energy Performance Certificate (EPC)
Rating C

Council Tax Band
D



STONE

Let's Talk

01737 301 557

hello@stoneestateagents.co.uk

stoneestateagents.co.uk

The particulars above are a guide, not an offer or contract. Descriptions photographs and plans are not statements or representations of fact. Measurements are approximate and not to scale. Prospective purchasers must verify the accuracy of the information within the particulars. Stone does not give any representations or warranties; nor represent the Seller legally. Stone has no liability, for any costs, losses or expenses incurred by the Seller or a prospective buyer relating to the sales and buying transaction. Our Sales Disclaimer, trading names and privacy policy on how your data is processed and used is found in full on our website in our Privacy Statement.

© Stone Estate Agents 2023 All rights Reserved